

LEGEND

ECOLOGICAL MITIGATION AND OFFSETTING SITES - 62.5Ha

- TERRESTRIAL OFFSETTING SITES - 11Ha
- WETLAND OFFSETTING SITES - 10Ha
- TERRESTRIAL BUFFER PLANTING - 1.5Ha
- RIPARIAN / FRESHWATER OFFSETTING SITES - 28Ha
- RIPARIAN / FRESHWATER - MITIGATION PLANTING - 12Ha

LANDSCAPING AND VISUAL PLANTING - 145Ha

- REHABILITATION PLANTING (WITHIN FOOTPRINT) - 103Ha
- NATURALISED STORMWATER PLANTING (WITHIN FOOTPRINT) - 19Ha
- RESTORATION PLANTING (OUTSIDE FOOTPRINT) - 23Ha
- GRASS REHABILITATION - 57Ha
- NATURAL CHARACTER PLANTING - 41Ha
- MATERIAL SUPPLY SITES PLANTING - 38Ha
- TREES - No. 1797 (LARGER GRADES, 2.4m AT PLANTING)

INDICATIVE SWALE (NOTE: SWALE SHOWN DIAGRAMMATICALLY, SEE ENGINEERING DRAWINGS FOR TYPICAL DETAIL)

GENERAL

- EXISTING PROPERTY BOUNDARY
- TEMPORARY WORKS AREA
- PROPOSED DESIGNATION BOUNDARY
- EXISTING STREAM
- PROPERTY ACCESS
- SPOIL SITE
- SHARED USE PATH
- ROCK REVETMENT

OFFSET + NATURAL CHARACTER PLANTING IS SUBJECT TO LANDOWNER APPROVAL

REV	DESCRIPTION	DRN	CHK	APP	DATE
C	PLANTING LEGEND AND HATCHES UPDATED - ISSUED FOR RMA CONSENT	MN	GL	PP	30.06.23
B	PLANTING LEGEND AND HATCHES UPDATED - ISSUED FOR RMA CONSENT	BH	JP	JP	21.12.22
A	ISSUED FOR RMA CONSENT	MH	JP	JP	10.10.22

SURVEYED	DESIGNED	DRAWN	CAD REVIEW	DESIGN CHECK	DESIGN REVIEW	APPROVED	PROF REGISTRATION:
	Sophie Fisher	Sophie Fisher	Matt Hopkins	Lisa Rimmer	Gavin Lister	Phil Peet	

Client:

WAKA KOTAHI
OTAKI TO NORTH OF LEVIN PROJECT

PLANTING CONCEPT PLAN: RMA PURPOSE TYPE
SHEET 13

Status Stamp: **FOR CONSENT**

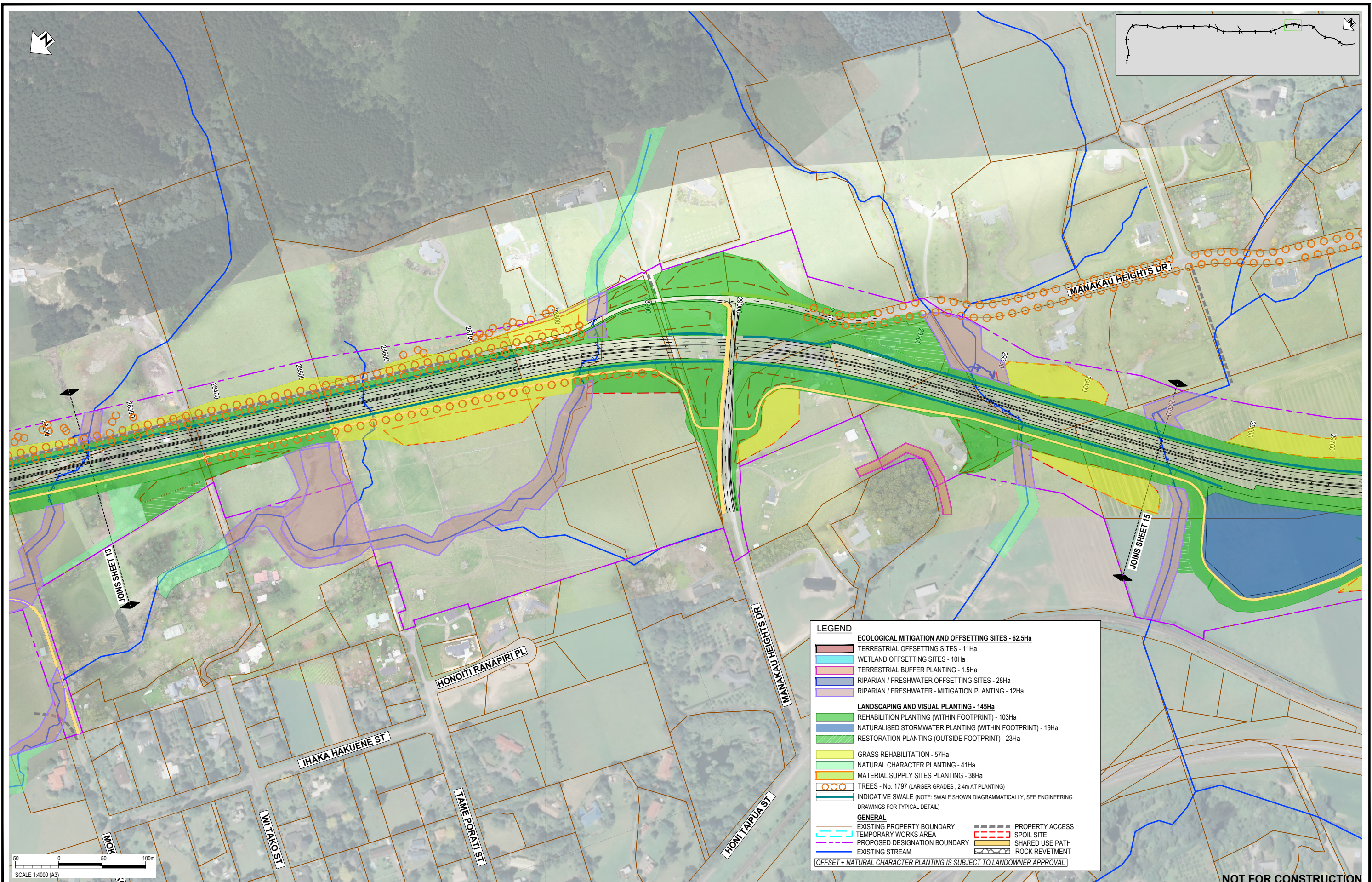
Date Stamp: **30.06.23**

Scale: 1 : 4000 (A3)

Drawing No: 310203848-01-700-C2012

Rev: **C**

pw:\stntec-ap-pw.bentley.com\stntec-ap-pw-01\Documents\New Zealand Clients\NZTA (New Zealand Transport Agency)\310203848 - Otaki to North of Levin DBC\01 - O2NL1700 - Planting\310203848-01-700-C2012



LEGEND

ECOLOGICAL MITIGATION AND OFFSETTING SITES - 62.5Ha

- TERRESTRIAL OFFSETTING SITES - 11Ha
- WETLAND OFFSETTING SITES - 10Ha
- TERRESTRIAL BUFFER PLANTING - 1.5Ha
- RIPARIAN / FRESHWATER OFFSETTING SITES - 28Ha
- RIPARIAN / FRESHWATER - MITIGATION PLANTING - 12Ha

LANDSCAPING AND VISUAL PLANTING - 145Ha

- REHABILITATION PLANTING (WITHIN FOOTPRINT) - 103Ha
- NATURALISED STORMWATER PLANTING (WITHIN FOOTPRINT) - 19Ha
- RESTORATION PLANTING (OUTSIDE FOOTPRINT) - 23Ha
- GRASS REHABILITATION - 57Ha
- NATURAL CHARACTER PLANTING - 41Ha
- MATERIAL SUPPLY SITES PLANTING - 38Ha
- TREES - No. 1797 (LARGER GRADES, 2-4m AT PLANTING)
- INDICATIVE SWALE (NOTE: SWALE SHOWN DIAGRAMMATICALLY, SEE ENGINEERING DRAWINGS FOR TYPICAL DETAIL)

GENERAL

- EXISTING PROPERTY BOUNDARY
- TEMPORARY WORKS AREA
- PROPOSED DESIGNATION BOUNDARY
- EXISTING STREAM
- PROPERTY ACCESS
- SPOIL SITE
- SHARED USE PATH
- ROCK REVETMENT

OFFSET + NATURAL CHARACTER PLANTING IS SUBJECT TO LANDOWNER APPROVAL

REV	DESCRIPTION	DRN	CHK	APP	DATE
C	PLANTING LEGEND AND HATCHES UPDATED - ISSUED FOR RMA CONSENT	MN	GL	PP	30.06.23
B	PLANTING LEGEND AND HATCHES UPDATED - ISSUED FOR RMA CONSENT	BH	JP	JP	21.12.22
A	ISSUED FOR RMA CONSENT	MH	JP	JP	10.10.22

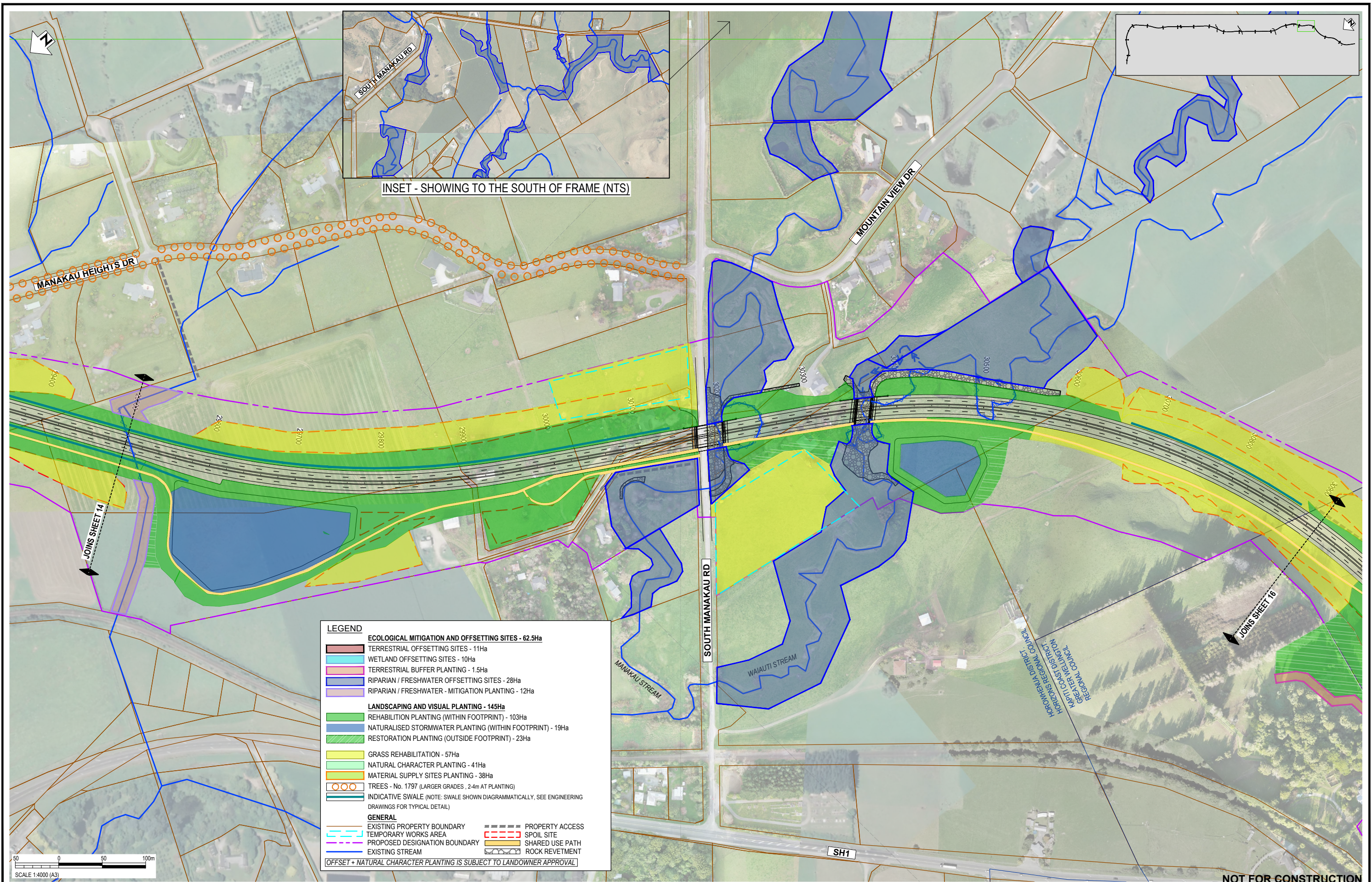
ROLE	NAME	DATE
SURVEYED		
DESIGNED	Sophie Fisher	13.04.22
DRAWN	Sophie Fisher	13.04.22
CAD REVIEW	Matt Hopkins	10.10.22
DESIGN CHECK	Lisa Rimmer	10.10.22
DESIGN REVIEW	Gavin Lister	10.10.22
APPROVED	Phil Peet	30.06.23

Client:

WAKA KOTAHI
OTAKI TO NORTH OF LEVIN PROJECT

PLANTING CONCEPT PLAN: RMA PURPOSE TYPE
SHEET 14

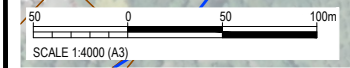
Status Stamp	FOR CONSENT
Date Stamp	30.06.23
Scales	1 : 4000 (A3)
Drawing No.	310203848-01-700-C2013
Rev.	C



LEGEND

ECOLOGICAL MITIGATION AND OFFSETTING SITES - 62.5Ha	
[Red Box]	TERRESTRIAL OFFSETTING SITES - 11Ha
[Light Blue Box]	WETLAND OFFSETTING SITES - 10Ha
[Pink Box]	TERRESTRIAL BUFFER PLANTING - 1.5Ha
[Blue Box]	RIPARIAN / FRESHWATER OFFSETTING SITES - 28Ha
[Purple Box]	RIPARIAN / FRESHWATER - MITIGATION PLANTING - 12Ha
LANDSCAPING AND VISUAL PLANTING - 145Ha	
[Green Box]	REHABILITATION PLANTING (WITHIN FOOTPRINT) - 103Ha
[Light Green Box]	NATURALISED STORMWATER PLANTING (WITHIN FOOTPRINT) - 19Ha
[Dark Green Box]	RESTORATION PLANTING (OUTSIDE FOOTPRINT) - 23Ha
[Yellow Box]	GRASS REHABILITATION - 57Ha
[Light Yellow Box]	NATURAL CHARACTER PLANTING - 41Ha
[Orange Box]	MATERIAL SUPPLY SITES PLANTING - 38Ha
[Orange Circles]	TREES - No. 1797 (LARGER GRADES - 2.4m AT PLANTING)
[Dashed Line]	INDICATIVE SWALE (NOTE: SWALE SHOWN DIAGRAMMATICALLY, SEE ENGINEERING DRAWINGS FOR TYPICAL DETAIL)
GENERAL	
[Red Dashed Line]	EXISTING PROPERTY BOUNDARY
[Blue Dashed Line]	TEMPORARY WORKS AREA
[Purple Dashed Line]	PROPOSED DESIGNATION BOUNDARY
[Blue Line]	EXISTING STREAM
[Red Dashed Line]	PROPERTY ACCESS
[Grey Box]	SPOIL SITE
[Yellow Box]	SHARED USE PATH
[Grey Box]	ROCK REVETMENT

OFFSET + NATURAL CHARACTER PLANTING IS SUBJECT TO LANDOWNER APPROVAL



NOT FOR CONSTRUCTION

REV	DESCRIPTION	DATE	DRN	CHK	APP
C	PLANTING LEGEND AND HATCHES UPDATED - ISSUED FOR RMA CONSENT	30.06.23	MN	GL	PP
B	PLANTING LEGEND AND HATCHES UPDATED - ISSUED FOR RMA CONSENT	21.12.22	BH	JP	JP
A	ISSUED FOR RMA CONSENT	10.10.22	MH	JP	JP

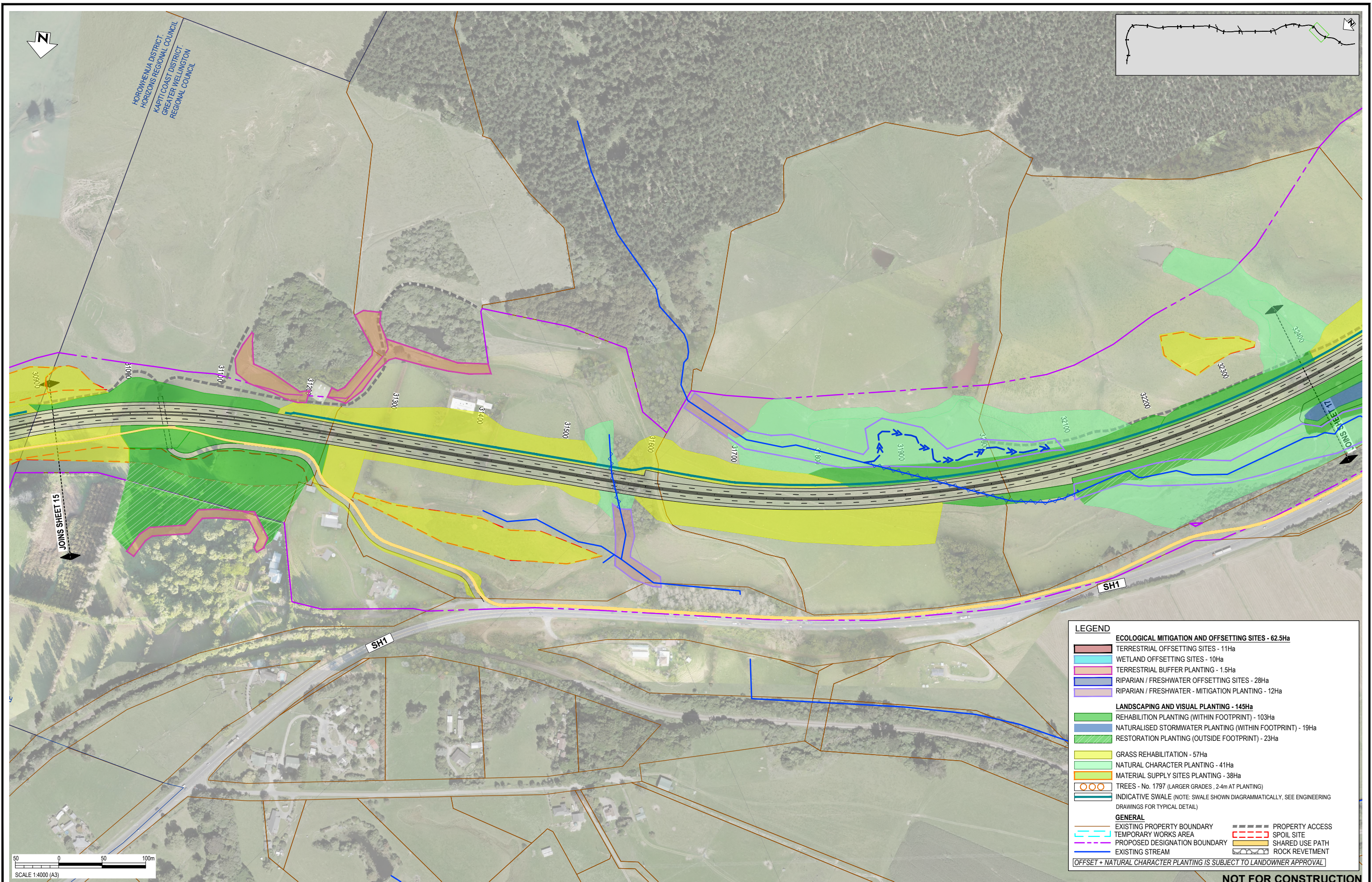
DATE	DESCRIPTION	BY
13.04.22	SURVEYED	Sophie Fisher
13.04.22	DESIGNED	Sophie Fisher
10.10.22	DRAWN	Matt Hopkins
10.10.22	CAD REVIEW	Lisa Rimmer
10.10.22	DESIGN CHECK	Gavin Lister
30.06.23	APPROVED	Phil Peet

Client:

WAKA KOTAHI
OTAKI TO NORTH OF LEVIN PROJECT

PLANTING CONCEPT PLAN: RMA PURPOSE TYPE
SHEET 15

Status Stamp	FOR CONSENT
Date Stamp	30.06.23
Scale	1 : 4000 (A3)
Drawing No.	310203848-01-700-C2014
Rev.	C



REV	DESCRIPTION	DRN	CHK	APP	DATE
C	PLANTING LEGEND AND HATCHES UPDATED - ISSUED FOR RMA CONSENT	MN	GL	PP	30.06.23
B	PLANTING LEGEND AND HATCHES UPDATED - ISSUED FOR RMA CONSENT	BH	JP	JP	21.12.22
A	ISSUED FOR RMA CONSENT	MH	JP	JP	10.10.22

STAGE	NAME	DATE
SURVEYED		
DESIGNED	Sophie Fisher	13.04.22
DRAWN	Sophie Fisher	13.04.22
CAD REVIEW	Matt Hopkins	10.10.22
DESIGN CHECK	Lisa Rimmer	10.10.22
DESIGN REVIEW	Gavin Lister	10.10.22
APPROVED	Phil Peet	30.06.23

Client:

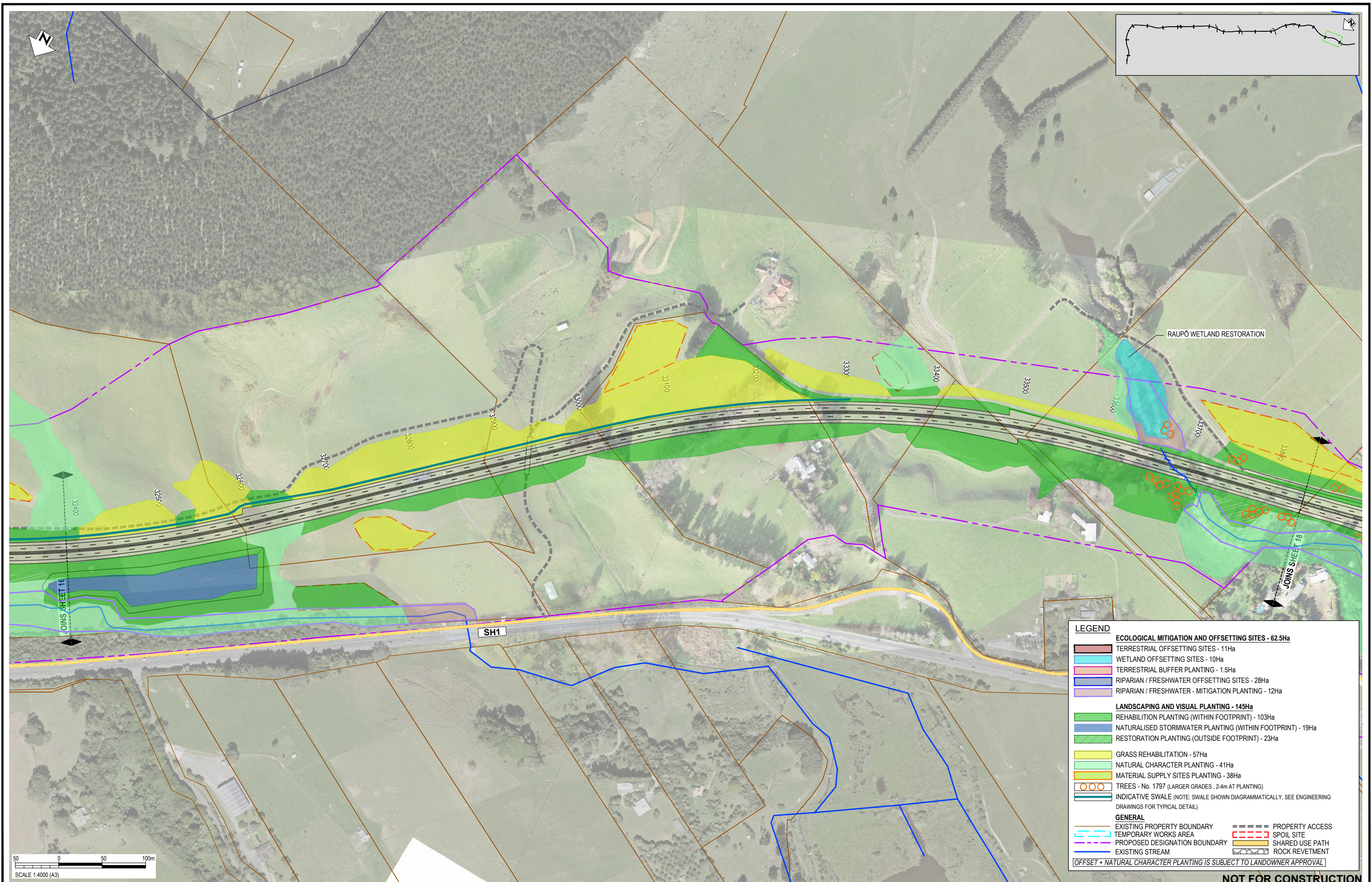



WAKA KOTAHI
 OTAKI TO NORTH OF LEVIN PROJECT

PLANTING CONCEPT PLAN: RMA PURPOSE TYPE
 SHEET 16

Status Stamp	FOR CONSENT
Date Stamp	30.06.23
Scale	1 : 4000 (A3)
Drawing No.	310203848-01-700-C2015
Rev.	C

pw:\stntec-ap-pw.bentley.com\stntec-ap-pw-01\Documents\New Zealand Clients\NZTA (New Zealand Transport Agency)\310203848 - Otaki to North of Levin DBC01 - OZNL1700 - Planting\310203848-01-700-C2015



LEGEND	
ECOLOGICAL MITIGATION AND OFFSETTING SITES - 62.5Ha	
	TERRESTRIAL OFFSETTING SITES - 11Ha
	WETLAND OFFSETTING SITES - 10Ha
	TERRESTRIAL BUFFER PLANTING - 1.5Ha
	RIPARIAN / FRESHWATER OFFSETTING SITES - 28Ha
	RIPARIAN / FRESHWATER - MITIGATION PLANTING - 12Ha
LANDSCAPING AND VISUAL PLANTING - 145Ha	
	REHABILITATION PLANTING (WITHIN FOOTPRINT) - 103Ha
	NATURALISED STORMWATER PLANTING (WITHIN FOOTPRINT) - 19Ha
	RESTORATION PLANTING (OUTSIDE FOOTPRINT) - 23Ha
	GRASS REHABILITATION - 57Ha
	NATURAL CHARACTER PLANTING - 41Ha
	MATERIAL SUPPLY SITES PLANTING - 38Ha
	TREES - No. 1797 (LARGER GRADES, 2.4m AT PLANTING)
	INDICATIVE SWALE (NOTE: SWALE SHOWN DIAGRAMMATICALLY, SEE ENGINEERING DRAWINGS FOR TYPICAL DETAIL)
GENERAL	
	EXISTING PROPERTY BOUNDARY
	TEMPORARY WORKS AREA
	PROPOSED DESIGNATION BOUNDARY
	EXISTING STREAM
	PROPERTY ACCESS
	SPOIL SITE
	SHARED USE PATH
	ROCK REVETMENT
<i>(OFFSET + NATURAL CHARACTER PLANTING IS SUBJECT TO LANDOWNER APPROVAL)</i>	

NOT FOR CONSTRUCTION

REV	DESCRIPTION	MN	GL	PP	DATE
C	PLANTING LEGEND AND HATCHES UPDATED - ISSUED FOR RMA CONSENT	MN	GL	PP	30.06.23
B	PLANTING LEGEND AND HATCHES UPDATED - ISSUED FOR RMA CONSENT	BH	JP	JP	21.12.22
A	ISSUED FOR RMA CONSENT	MH	JP	JP	10.10.22

STATUS	NAME	DATE
SURVEYED		
DESIGNED	Sophie Fisher	13.04.22
DRAWN	Sophie Fisher	13.04.22
CAD REVIEW	Matt Hopkins	10.10.22
DESIGN CHECK	Lisa Rimmer	10.10.22
DESIGN REVIEW	Gavin Lister	10.10.22
APPROVED	Phil Peet	30.06.23

Client:

WAKA KOTAHI
OTAKI TO NORTH OF LEVIN PROJECT

PLANTING CONCEPT PLAN: RMA PURPOSE TYPE
SHEET 17

Status Stamp	FOR CONSENT
Date Stamp	30.06.23
Scale	1 : 4000 (A3)
Drawing No.	310203848-01-700-C2016
Rev.	C

