

# Trends in Child and Youth Prosecutions

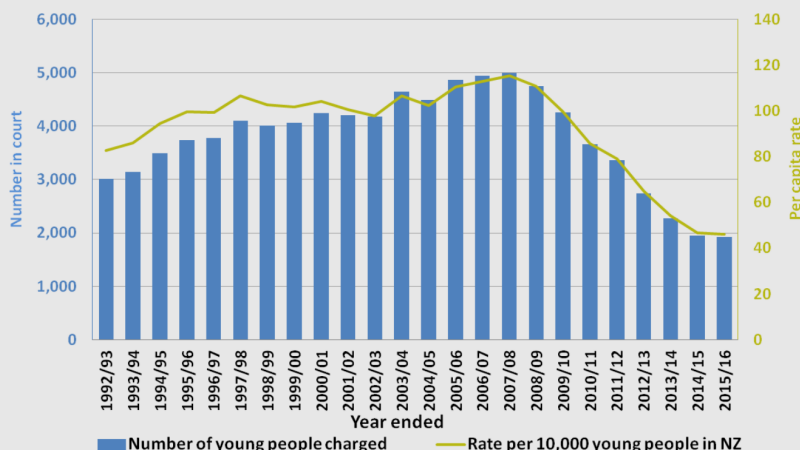
## Court statistics for 10-16 year olds in the year ended June 2016

The number of children (10-13) and youth (14-16) charged in court continues to decline

The number of children and youth in court:

- ↓ Decreased by 1% since 2014/15
- ↓ Decreased by 47% since 2010/11
- ◀ Account for less than 3% of all people charged in court in 2015/16

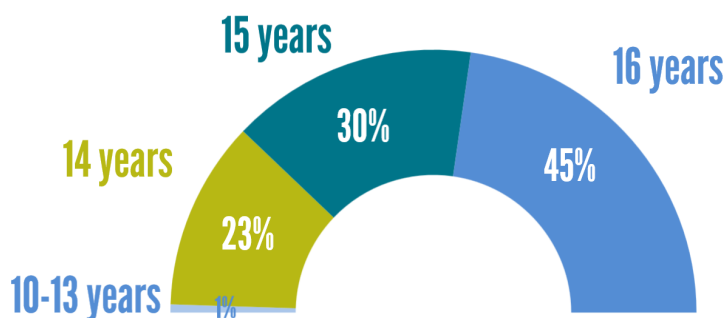
Number and rate of young people charged in court 1992/93 - 2015/16



The number of young people charged in court has decreased for all gender, age and ethnic groups over the past 5 years



The majority of young people in court are aged 15 or 16



	2014/15	2015/16	Change
Māori	1,155	1,197	+4%
European	492	444	-10%
Pacific People	231	210	-9%

Proportion who are Māori has increased in the last 10 years



Most charges are proved, and plans agreed at Family Group Conferences are followed

Instead of undertaking a Family Group Conference plan, a small number of children and young people with proved charges received one of these as their most serious order:

- 123 monetary, confiscation, or disqualifications
- 105 community work order or supervision order
- 63 compulsory community programme which may be followed by supervision
- 93 supervision with residence

The number receiving adult sentences has dropped by more than 3/4 over the last 10 years



Non-imprisonable traffic offences, jury trials, murder and manslaughter are dealt with in the District or High Courts.

These statistics include all children and young people charged in any court, including Youth, District and High Courts.

For more information contact us at [justiceinfo@justice.govt.nz](mailto:justiceinfo@justice.govt.nz). More detailed prosecution statistics are available on the Statistics NZ website [www.stats.govt.nz/nzdotstat](http://www.stats.govt.nz/nzdotstat) under 'Justice'.

All data has been randomly rounded for privacy reasons.